

Alden INDUSTRIAL SERIES
proGrabit[®]
 Broken Bolt & Damaged Screw
 Extractor



POWER DRIVEN

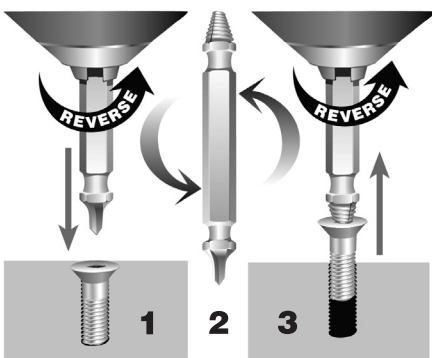
Easy to use with a 3/8-in. variable speed reversible drill



WARNING

Always wear safety glasses & protective clothing when operating or near power tools.

1. Screw remover to be used in a variable speed hand drill set for reverse.
2. Can be used in "quick Change" type chucks for fast, efficient usage.
3. Tool can be compromised if extracting large screws (bolts) exceeding 2 inches in length and/or have aggressive threads.



OPERATING INSTRUCTIONS

1. Burnishing

- a. Be certain the work piece is secure and will not move during the use of this remover.
- b. Insert remover directly into drill or quick-change chuck so burnishing end is showing.
- c. Set drill for reverse (counterclockwise)
- d. Place burnishing end of tool into the center of the damaged screw (bolt), and apply power to your hand drill while applying pressure towards the screw. Stop when there is a distinct 1/16" deep clean area in the center of the screw (bolt) head.

2. Remove burnishing end from chuck, flip tool, replace into drill chuck with Remover end now showing.

3. Removing

- a. Maintain reverse setting (counterclockwise)
- b. Place remover end of tool into now smooth screw head.
- c. Apply firm downward pressure, drill at slow speed. Apply lowest level of power to the hand drill.
- d. Remover end of the tool will thread into screw head and remove. For free spinning screws (bolts), pull drill lightly away from the threads holding the screw (bolts).

Reusable

This damaged screw and bolt remover is reusable. Clean chips off tool and lubricate with oil after use.

Helpful Hints

For hard to remove screws (bolts), and if the remover slips or does not bite into the screw (bolt), re-burnish the screw (bolt) so that the contact area is an additional 1/16" deeper than before. Or, if applicable, try moving up in remover size repeating each step from the beginning of these instructions. Caution, both of these helpful hints could compromise the screw (bolt) head or the tool.

	Screws	Bolts
ProGrabit # 1	No.4 - No.7	No.10 (5mm)
ProGrabit # 2	No.8 - No.10	1/4-in. (6mm)
ProGrabit # 3	No.11 - No.14	5/16-in. (8mm)
ProGrabit # 4	No.16 - No.24	3/8-in. (10mm)

www.aldn.com



Patented: USA #6,761,089; 5,251,516; D-340,184.
 Canada #2,490,546. **MADE IN USA.**
 Grabit[®] is a registered trademark of Alden Corp.